

Social Script

FRANKSTON **ARTS** CENTRE

This guide can be used to familiarise anyone visiting the Frankston Arts Centre and can be helpful for people on the autism spectrum.

Frankston Arts Centre

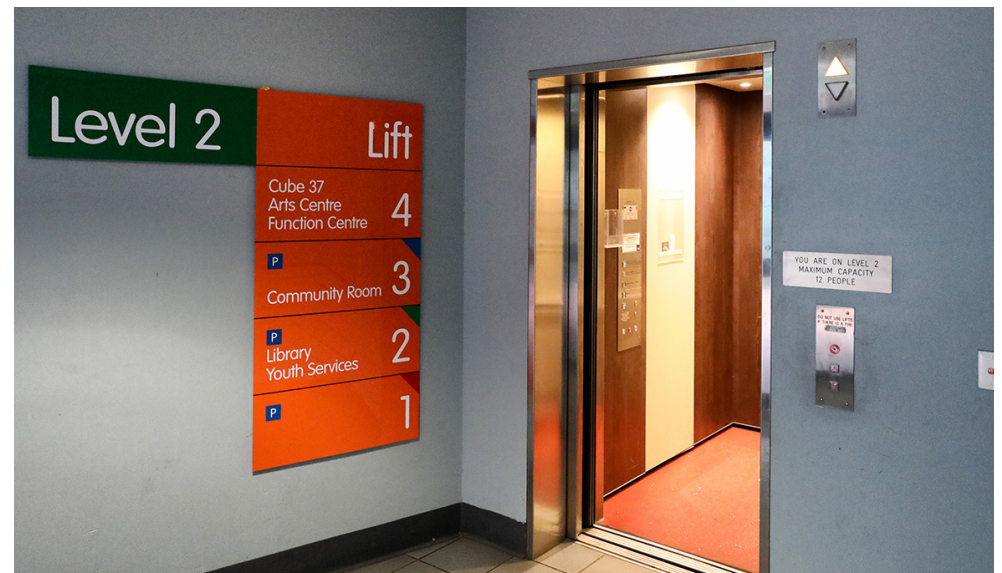
Frankston Arts Centre is a place where I can watch performances like theatre, music and dance concerts.



Arriving at Frankston Arts Centre

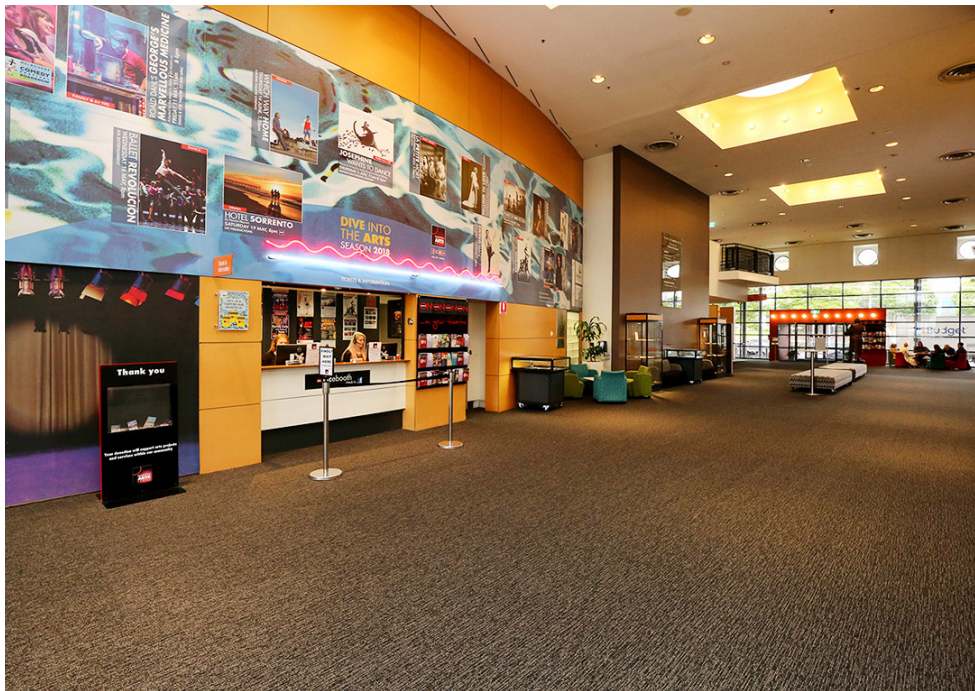
I can catch a bus and get dropped off on Davey Street or go by car.

The car park is underneath the venue and I can use the stairs or a lift.



Frankston Arts Centre Foyer

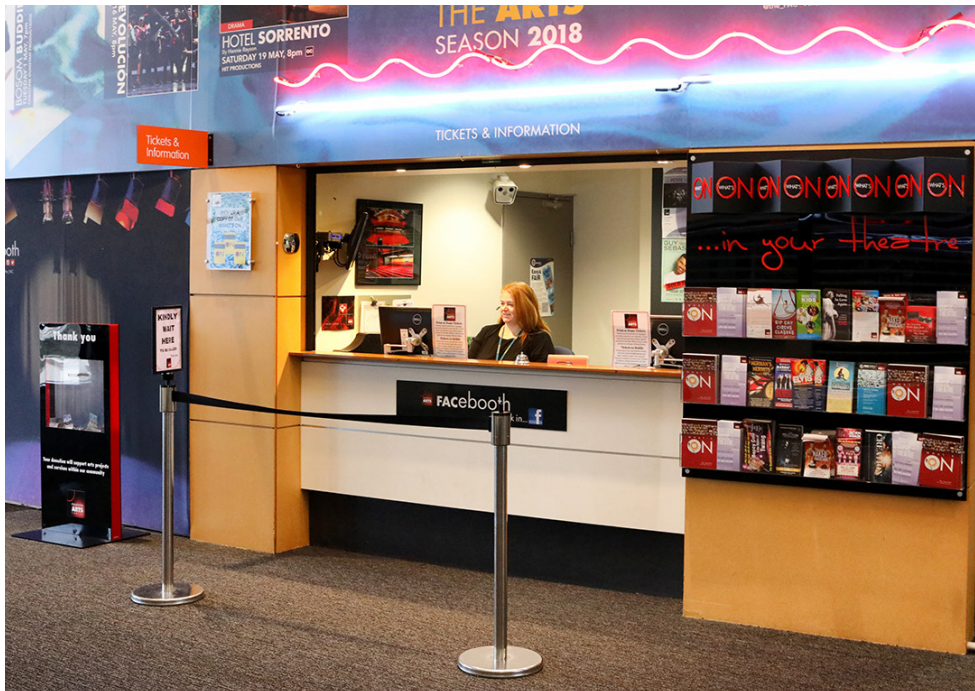
The foyer can be quiet or busy depending on the time of day that I visit



Frankston Arts Centre Box Office

When I arrive at Frankston Arts Centre, I may need to collect my ticket at the Box Office.

The ticket will have a seat number. When the theatre doors open, the friendly staff and ushers will show us where to sit.



Frankston Arts Centre Theatre

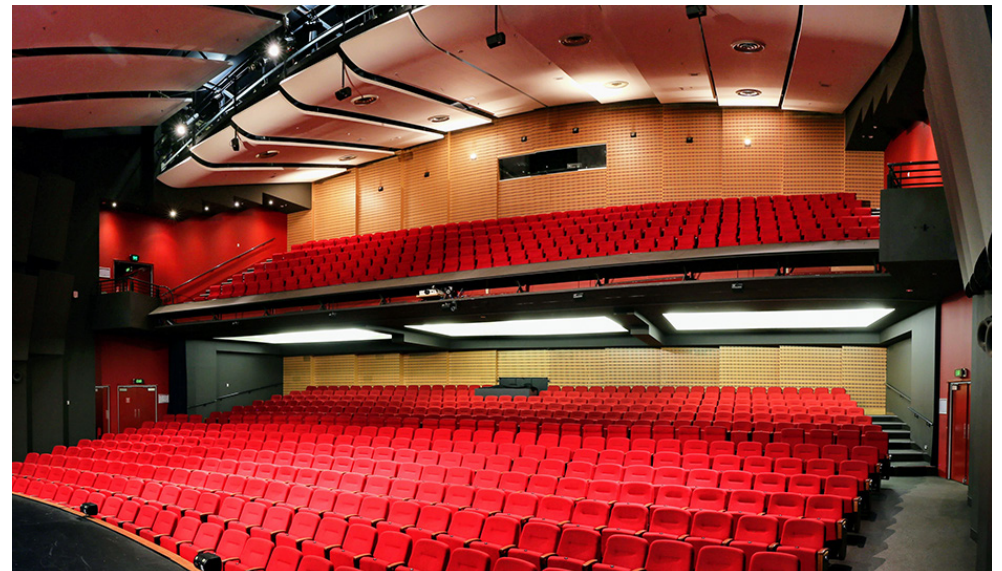
Inside Frankston Arts Centre there is a theatre with 800 seats.

The theatre lights will go out when the show is about to start.

If the show is too noisy I can wear headphones if I need to.

Mobile devices are not allowed during the performance, however, if I need it to help me I can let the ushers know.

Staff want to make me happy so I feel comfortable.



Frankston Arts Centre Performances

Performances may contain loud music, haze and flashing lights. If this makes me feel uncomfortable I can leave the theatre quietly and safely. An usher will help me to exit by opening the doors. Ushers will have torches to help me see in a dark theatre.

At the end of a performance the performers will come and take a bow – I can clap to thank them.



Frankston Arts Centre Toilets

If I need to go to the toilet, there are signs on the doors throughout the building.

The toilets might be busy and I may have to wait in a line to get in to the bathrooms.

The toilets have hand dryers which can be loud so I can use paper towels.



Frankston Arts Centre Quiet Spaces

There are calm and quiet spaces around the venue if I need some space.

The library forecourt, the outdoor balcony or the gallery spaces in the Arts Centre are places to get away from noise and crowds.



Cube 37

FRANKSTON **ARTS** CENTRE

Cube 37

Cube 37 is a community arts hub including an art gallery, meeting rooms and a performance space next door to the Frankston Arts Centre.



Cube 37

When arriving at Cube 37 there is a desk where I can ask staff for help or information.



Cube 37 is a welcoming place where I can look at art, participate in art activities or see a show.



Cube 37 Gallery

There is interesting art to look at. Some things I can touch.
Some things I can't touch. If I am unsure I can ask the
friendly staff.



Cube 37 Performance Space

Inside Cube 37 there is a 200 seat performance space. It is much smaller than the big auditorium next door.

I may need to use stairs to get to my seat.

Friendly ushers will be able to help me on the day.



Cube 37 Toilets

If I need to go to the toilet,
there are signs on the doors.

They might be busy and I may
have to wait in a line to get to
the bathroom.

The toilets have hand dryers
that can be loud, but there
are paper hand towels I
can use.



Cube 37 Quiet Spaces

There are usually some calm and quiet spaces if I need some space. The Cube 37 courtyard or the gallery spaces in the Arts Centre foyer can be a nice place to get away from noise and crowds.



Other useful information for your visit

Frankston Arts Centre provides some shows with the following services:



Auslan Signed



Open Captioning



Audio Description



Relaxed Performance

A Relaxed Performance is designed to welcome visitors, their family and friends with sensory sensitivities.

Some staging elements are modified to create a low sensory environment.

A relaxed attitude is taken to movement and noise in the auditorium.

If you need to take a break during the show you are welcome to move to the foyer or a quieter space in the auditorium if there are spare seats. Ushers can assist you.

Other useful information for your visit

You can take cold drinks into the theatre or a small snack. You can't take hot food, hot drinks, or ice cream in to the theatre.

The venue is open one hour prior to the show time and during the times listed below.

FAC - Opening Hours:

Monday-Friday .. 9am-5pm

Saturday 9am-2pm

Cube 37 - Opening Hours:

Monday Closed

Tuesday-Friday... 9am-5pm

Saturday 9am-2pm

You are welcome to visit the exhibitions during these times.

Please ask the friendly staff about current exhibitions or before your visit go to www.thefac.com.au

Other useful information for your visit

There are no ATM or facilities for getting “cash out” at the FAC. The closest ATM’s are on Playne Street.

The closest Train Station is Frankston Station.

The closest car park is underneath the centre and is accessed via Young Street. It costs \$2 for an hour, or \$6.50 for the day.

Frankston Library is very close to Frankston Arts Centre and is a great place to visit.

To see what’s on at the Library visit:

<https://library.frankston.vic.gov.au/Home>